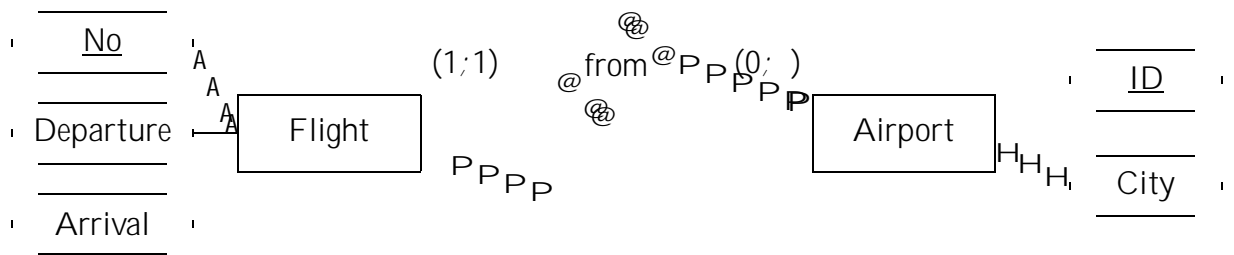
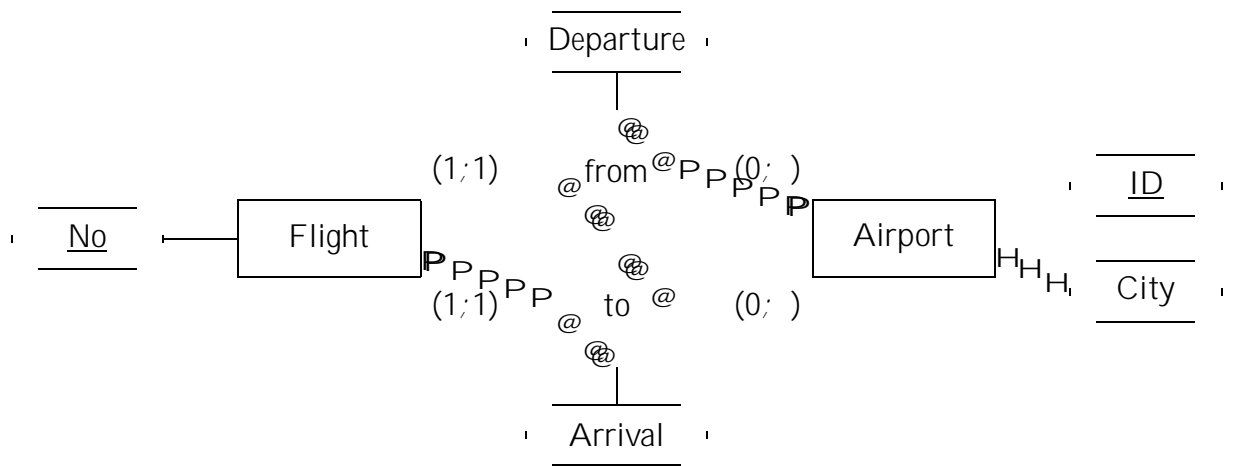


Please define also keys and cardinalities. If other constraints should be needed, it suffices to sketch them in natural language.

Exercise 2 (Comparison of ER-Schemas)

3 Points

Is there an essential difference between these ER-schemas? The departure and arrival times are once represented as attributes of the relationships "from" and "to", and once represented as attributes of the entity. Please explain your answer.



Exercise 4 (Keys)

3 Points

Which key is more restrictive?

Next, there is a table with information about orders and recipients (to whom the orders should be delivered):

Order
